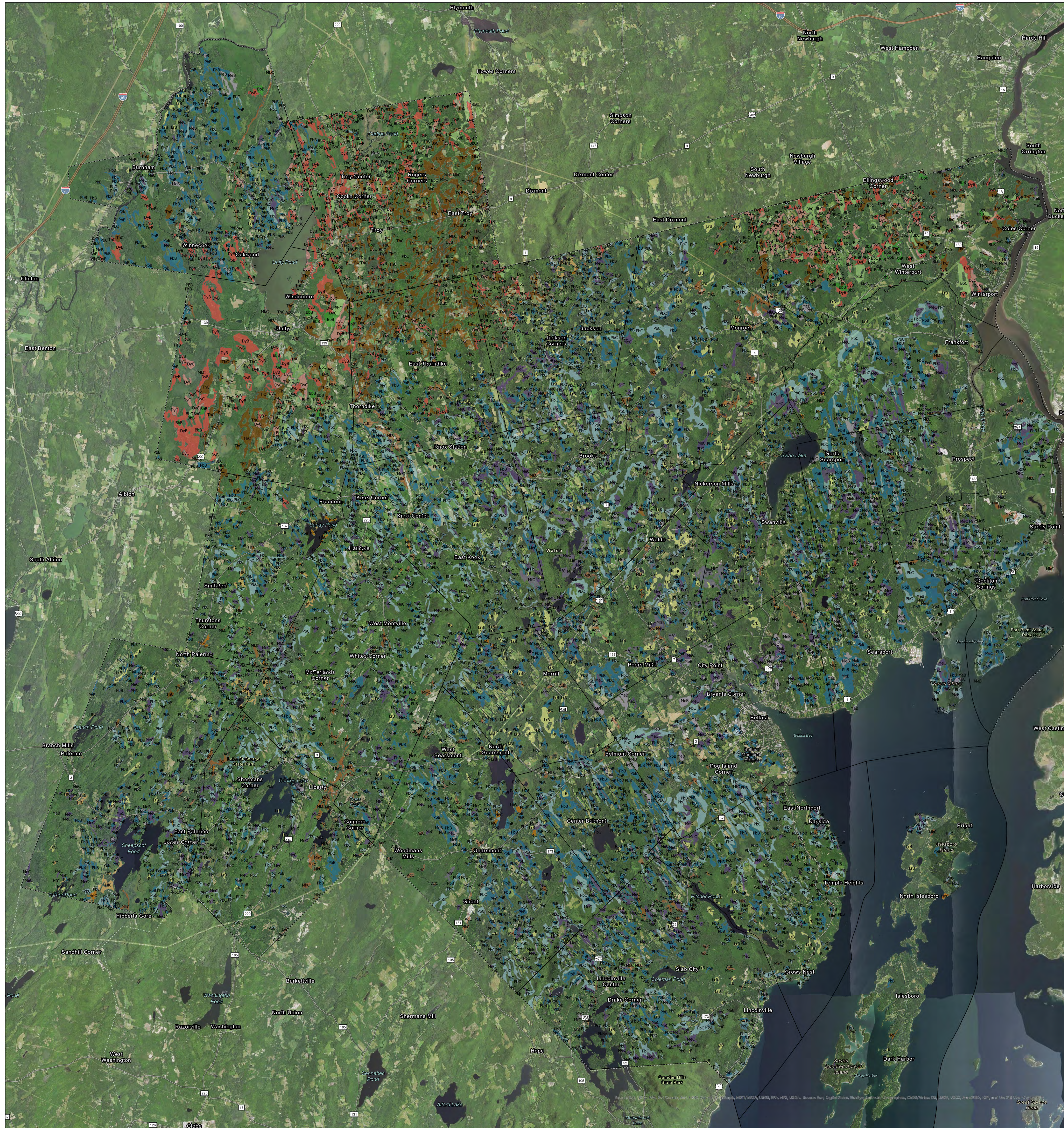


# Waldo County, ME Important Soils



## Soil Map Units

- AdC - Adams loamy sand, 3 to 8 percent slopes
- BbB - Bangor very stony silt loam, 3 to 8 percent slopes
- BbC - Bangor very stony silt loam, 8 to 15 percent slopes
- DyB - Dixmont very stony silt loam, 3 to 8 percent slopes
- DyC - Dixmont very stony silt loam, 8 to 15 percent slopes
- HeC - Hermon sandy loam, 3 to 8 percent slopes
- HfC - Hermon sandy loam, 8 to 15 percent slopes, very stony
- LrB - Lyman-Rock outcrop complex, 3 to 8 percent slopes
- MeB - Marlow fine sandy loam, 0 to 8 percent slopes, very stony
- MeC - Marlow fine sandy loam, 8 to 15 percent slopes, very stony
- MfC - Marlow fine sandy loam, 3 to 15 percent slopes, extremely stony
- MkC - Masardis fine sandy loam, 8 to 15 percent slopes
- PbB - Peru fine sandy loam, 0 to 8 percent slopes, very stony
- PbC - Peru fine sandy loam, 8 to 15 percent slopes, very stony
- PcC - Peru fine sandy loam, 8 to 15 percent slopes, extremely stony
- ThC - Thorndike-Winnecook complex, 8 to 15 percent slopes, rocky

Map Projection: NAD 1983 UTM ZN19  
 Soil data: gSSURGO, Natural Resource Conservation Service (USDA)  
 Imagery: NAIP, Farm Service Agency (USDA)  
 Map created by Jasmine Gregory on March 9th, 2022

0 5 10 Miles

